

Nano

—

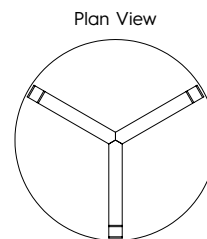
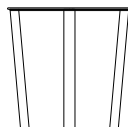
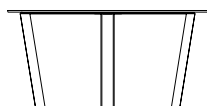


Tait.

Nano

Designed by Tait

Dynamic and sophisticated, Nano forms a collection of coffee and side tables, suited to outdoor and indoor settings. With a minimal design and sleek form, Nano is available in a range of sizes. The collection's undertones of luxury are exemplified by table top material options including marble and durable compact laminate.



Coffee Table High
 600mm Dia x 400mm H
 (23.5in. Dia x 15.75in. H)
 750mm Dia x 400mm H
 (29.5in. Dia x 15.75in. H)
 900mm Dia x 400mm H
 (35.5in. Dia x 15.75in. H)
 1200mm Dia x 400mm H
 (47.25in. Dia x 15.75in. H)

Coffee Table Low
 600mm Dia x 300mm H
 (23.5in. Dia x 11.75in. H)
 750mm Dia x 300mm H
 (29.5in. Dia x 11.75in. H)
 900mm Dia x 300mm H
 (35.5in. Dia x 11.75in. H)
 1200mm Dia x 300mm H
 (47.25in. Dia x 11.75in. H)

Side Table
 500mm Dia x 500mm H
 (19.75in. Dia x 19.75in. H)

Materials

Zinc-plated mild steel frames.
 Exterior-grade compact laminate, Carrara marble or pressurised stone table tops.

Finishes

Mild steel frame can be powder coated in a range of UV-stable colours.
 Compact laminate table top can be selected in a range of colours.
 Marble table tops feature a honed finish.

Care, Maintenance & Warranty

Five-year structural warranty.

Suitable Conditions



Made by Tait in Australia



Nano Materials

TOP OPTIONS - Stone

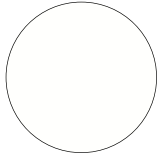


Carrara Marble

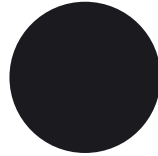


Black Granite

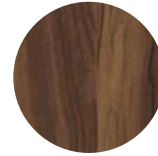
Compact Laminate



White



Black



Walnut

FINISHES - Powder coat

Refer to Tait powder coat chart Palette, for the full range of colour options.