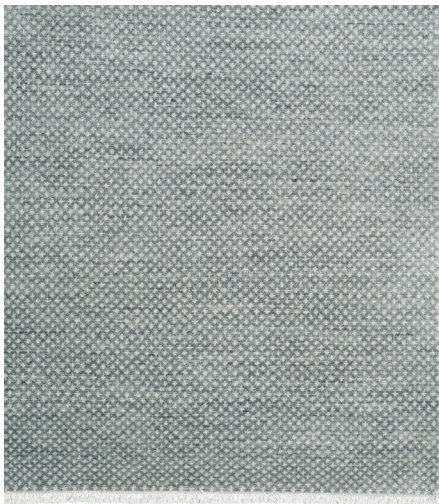


Leila



Colours & codes

Graphite & Sterling
LEI-GP/ST



Opal & Ivory
LEI-OP/IV



Metric

2.4 x 3 m

2.7 x 3.6 m

3 x 4.2 m*

Imperial

8' x 10'

9' x 12'

10' x 14'*

Notes

Handmade in India under Fair Trade standards. Custom size available. Underlay available. Underlay available. Max. size 6 x 15 m (19'8" x 49'3").

* For 3 x 4.2 m, custom lead times apply for Graphite & Sterling

Length of rug does not include tassels (20 mm or ¾" each end)

Fibre & construction

Fibre: **Wool**

Construction: **Hand knotted**

End finish: **Cotton tassels**

Height: **10 mm (¾")**

Composition

100% Wool Pile / 100% Cotton Warp & Weft

Suitability

Indoor

Residential

Light commercial project

Areas of use

Living

Dining

Bedroom

Hallway

Care instructions — Vacuum your rug regularly as shedding of loose fibres will occur with a new rug (do not use a rotating or brush head on the vacuum cleaner).

Promptly clean spills by blotting with a clean, undyed cloth. Do not dry clean or use harsh chemicals that could damage or fade your rug. Never fold your rug for storage or keep in an airtight bag. Avoid direct or continuous exposure to sunlight and rotate your rug to promote even wear. Professional cleaning is recommended on occasion to ensure the long life of your rug.

Please refer to our website for more information: armadillo-co.com

Delivery time for custom sizes and colours — 16 – 20 weeks.

Sizing — Due to our rugs being a handmade product, a 3% size variation is possible. Variations in pile height and total thickness of 1-3 mm are considered acceptable.

Colour — Every effort is made to ensure there is minimal colour variation, however some can be expected as our rugs are made primarily from natural fibres. All cut pile rugs will exhibit light and dark patches over time, as the fibres bend and reflect the light differently. This rug is designed to display gentle linear variations across the background. Placing rugs in direct and continuous sunlight will cause them to fade

and is not a manufacturing fault. Please note that the colours are indicative only and true colours are best matched to the samples before ordering.

Shedding — Natural fibre rugs will initially shed loose fibres, which can be hastened by regular vacuuming.

Pop-ups — Due to the nature of weaving, there will be short fibres popping up while the rug settles. These can be trimmed by hand with household scissors.

Stock rugs — From time to time a product will be out of stock. Armadillo will endeavour to ensure items are back in stock within 4 – 6 weeks.

Underlay/Rug pads — We recommend using an underlay/rug pad with all of our products.