



Specification Sheet

Sizes	Metric	Imperial
Size 0*	0.9 x 1.8 m	3' x 5'11"
Size 1*	1.4 x 2 m	4'7" x 6'7"
Size 2	1.7 x 2.4 m	5'7" x 7'10"
Size 3	2 x 3 m	6'7" x 9'10"
Size 3.5 <i>(NT/PU only)</i>	2.5 x 3.5 m	8'2" x 11'6"
Size 4	3 x 4 m	9'10" x 13'2"
-	-	-

* Natural & Chalk, Natural & Pumice only

Weave/Pile Height	Composition
1.5 cm (9/16")	60% Jute / 20% Viscose / 20% Wool

End Finish	Use Purpose
Natural Turnover	Indoor

Construction

Hand woven flat weave. Handmade in India under Fair Trade standards.

Notes

Custom size including hall runners and circular rugs available. Latex backing available. Max. size 4 x 10 m (13'2" x 32'10")

Suitability

- Residential
- Light commercial project
- Hall runners
- Direct sunlight
- Outdoors

Areas of Use



Manufacturing Variations

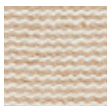
Size - Can vary by +/- 3%.

Colour - Rugs are primarily made from natural and undyed fibres. Every effort is made to ensure there is minimal colour variation however some variation can be expected.

Shedding - Natural fibre rugs will initially shed loose fibres, which can be hastened by regular vacuuming.

Pop-ups - Due to the nature of weaving, there will be short fibres popping up while the rug settles. These can be trimmed or pushed through.

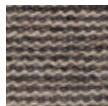
Colours & Codes



KAL-NT/CK
Natural & Chalk



KAL-NT/PU
Natural & Pumice



KAL-PW/CH
Pewter & Charcoal

Care Instructions

Vacuum your rug regularly as shedding of loose fibres will occur with a new rug (do not use a rotating or brush head on the vacuum cleaner). Due to the deep colour of parts of this product, some colour transfer may be experienced, avoid use on light coloured surfaces without an underlay.

Promptly clean spills by blotting with a clean, undyed cloth. Do not dry clean or use harsh chemicals that could damage or fade your rug. Never fold your rug for storage or keep in an airtight bag. Avoid direct or continuous exposure to sunlight and rotate your rug to promote even wear. Professional cleaning is recommended on occasion to ensure the long life of your rug.

Please refer to our website for more information: armadillo-co.com