



Specification Sheet

Sizes	Metric	Imperial
-	-	-
-	-	-
Size 2	1.7 x 2.4 m	5'7" x 7'10"
Size 3	2 x 3 m	6'7" x 9'10"
Size 3.5	2.5 x 3.5 m	8'2" x 11'6"
Size 4 <i>(DT only)</i>	3 x 4 m	9'10" x 13'2"
-	-	-

Weave/Pile Height	Composition
2 cm (3/4")	80% Wool / 20% Cotton / (100% Wool Pile)

End Finish	Use Purpose
Turnover	Indoor

Construction

Hand knotted rug. Handmade in India under Fair Trade standards.

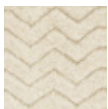
Notes

Custom size available. Underlay available. Max. size 4 x 10 m (13'2" x 32'10")

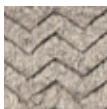
Suitability

- Residential
- Light commercial project
- Hall runners
- Direct sunlight
- Outdoors

Colours & Codes



SAV-NT
Natural



SAV-DT
Dust



SAV-CA
Carbon

Areas of Use



Care Instructions

Vacuum your rug regularly as shedding of loose fibres will occur with a new rug (do not use a rotating or brush head on the vacuum cleaner).

Promptly clean spills by blotting with a clean, undyed cloth. Do not dry clean or use harsh chemicals that could damage or fade your rug. Never fold your rug for storage or keep in an airtight bag. Avoid direct or continuous exposure to sunlight and rotate your rug to promote even wear. Professional cleaning is recommended on occasion to ensure the long life of your rug.

Please refer to our website for more information: armadillo-co.com

Manufacturing Variations

Size - Can vary by +/- 3%.

Colour - Rugs are primarily made from natural and undyed fibres. Every effort is made to ensure there is minimal colour variation however some variation can be expected. All cut pile rugs will exhibit light and dark patches over time, as the fibres bend and reflect the light differently. This rug is designed for gradations in colour to be visible in the pile. Not all samples will display the range and depth of shading in a full-sized rug.

Shedding - Natural fibre rugs will initially shed loose fibres, which can be hastened by regular vacuuming.

Pop-ups - Due to the nature of weaving, there will be short fibres popping up while the rug settles. These can be trimmed.