



UERPAN
series 430



SERIES 430 CHAIR (1967)
PANTON MOVE TABLE (1972)
Verner Panton



Series 430 chair

Designed by Verner Panton in 1967

Fully upholstered multi-purpose stacking chair.

Designed almost 50 years ago Series 430 has all the features required of a modern chair – small footprint, beautiful finish, good stacking ability and exceptional comfort

– making it the perfect chair for almost any setting.

Height chair: 82 cm

Seat height chair: 46 cm

SERIES 430 CHAIR (1967)
PANTON MOVE TABLE (1972)
Verner Panton





Contract certified chair



Perfect for:

- HOTELS
- RESTAURANTS
- CONFERENCE ROOMS
- OFFICES
- PRIVATE RESIDENCES

SERIES 430 CHAIR (1967)
Verner Panton





SERIES 430 CHAIR (1967)
PANTON MOVE TABLE (1972)
SPIRAL SP01, PENDANT (1969)
Verner Panton



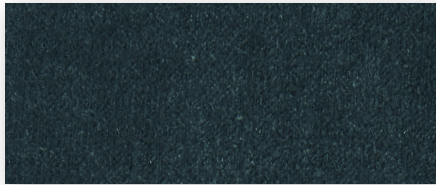
Standard fabrics & colours in stock



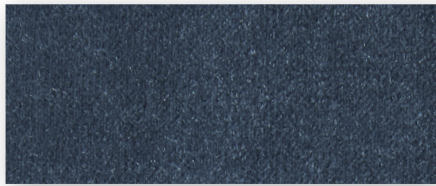
Hallingdal 65
70% Wool, 30% viscose
Colour: 130 / Grey



Hallingdal 65,
70% Wool, 30% viscose
Colour: 180 / Black grey



Harald 2,
100% Cotton
Colour: 982 / Green



Harald 2,
100% Cotton
Colour: 182 / Blue grey

Hallingdal 65
70% Wool, 30% viscose
Colour: 130 / Grey



Hallingdal 65,
70% Wool, 30% viscose
Colour: 180 / Black grey



Harald 2,
100% Cotton
Colour: 982 / Green



Harald 2,
100% Cotton
Colour: 182 / Blue grey



Verner Panton

Danish designer (1926 -1998)

Among the giants of Danish Design, Verner Panton established a unique reputation for his exuberant originality and tireless experimentation. Panton created lamps, furniture and textiles – and was also a sought-after interior designer. Although he was at the forefront of mid-century Danish Modern, Panton’s contribution was anything but mainstream. He enthusiastically embraced new materials, he splashed with a bold colour palette, and he playfully imbued many of his sculptural creations with a strong graphical expression – without ever compromising on quality or workmanship.

Panton’s iconic works have emerged as contemporary design classics – as strikingly inventive now as they were 50 years ago.

Panton’s interior installations have attained legendary status. The most famous examples are the ‘Visiona’ ship installations for the Cologne Furniture Fair (1968 and 1970), the Spiegel publishing headquarters in Hamburg (1969) and the Varna restaurant in Aarhus (1970).

Verner Panton in his own words:

“The main purpose of my work is to provoke people into using their imagination. Most people spend their lives living in dreary, grey-beige conformity, mortally afraid of using colours. By experimenting with lighting, colours, textiles and furniture and utilizing the latest technologies, I try to show new ways, to encourage people to use their fantasy imagination and make their surroundings more exciting”.

Marianne Panton (Verner Panton’s wife):

“For 35 years, I had the pleasure of taking part in the world-famous design work by my husband Verner Panton. Accordingly, it is a wonderful experience for me now to see how popular the VerPan lighting has become - and just how timeless his design has turned out to be.

Of course I’m very proud that there is still so much interest in my husband’s design and his life’s work. It would have made Verner happy, and it certainly makes me happy. Verner had very clear attitudes regarding his work and regarding shape, colours and function. At the same time he made conscious and brave use of different materials. Also in a way and a combination which often led to his contemporaries disparaging the “timelessness” of his design. The great interest in his design today proves the opposite”.

Verpan

Founded in 2003

Verpan is - much like Verner Panton - a product of the Danish design tradition, which have put Denmark on the world map for functional, modern and unique design.

In close collaboration with the Panton estate - especially widow Marianne Panton - Verpan has acquired the production and sales rights to a significant part of Verner Panton's designs. In 2003 the production of lighting was initiated and in 2010 a furniture range was added and a continuous process of picking and choosing new products in the vast treasure chest of Panton work will bring many more items to life yet again.

All of the Verpan products stand out as some of the most elegant and memorable of Verner Panton's designs. Products that create life, sound, movement, color and light - design that brings value into the visual world around us all.



Marianne and Verner Panton in the Cloverleaf sofa during Visiona 2 (1970)

VERPAN APS

EGESKOVVEJ 29

8700 HORSSENS

DENMARK

+45 76 58 18 82

INFO@VERPAN.COM

WWW.VERPAN.COM



VERPAN



VERPAN
series 430





VERPAN APS

EGESKOVVEJ 29

8700 HORSSENS

DENMARK

+45 76 58 18 82

INFO@VERPAN.COM

WWW.VERPAN.COM



VERPAN