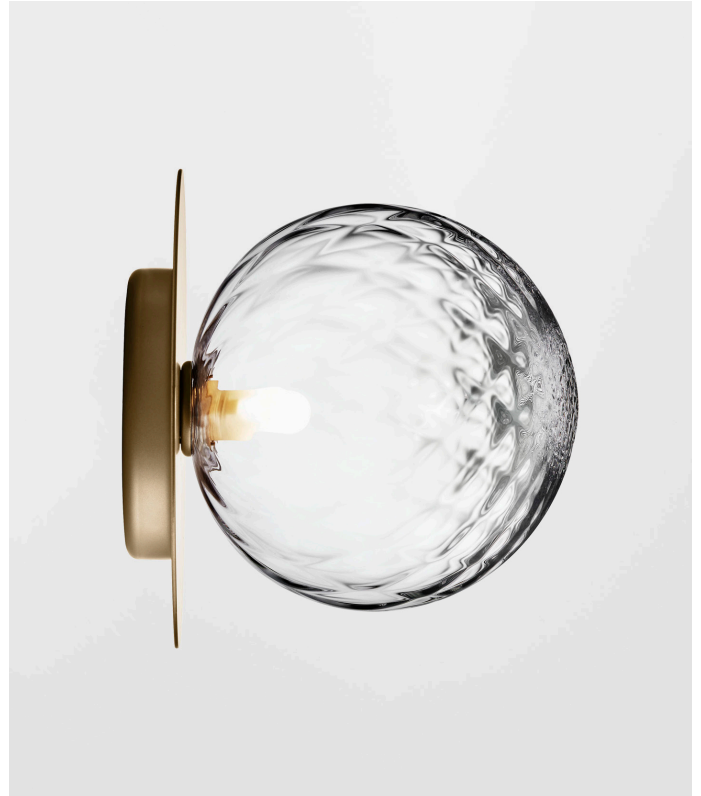


# NUURA



## LIILA 1 LARGE WALL/CEILING - Optic

Design: Sofie Refer, 2018. EU-model.

**Liila 1 Large Wall/Ceiling in mouth blown Optic Clear glass and Nordic Gold finish.**

Liila Collection has a Nordic simplistic yet sensuous look due to the fine reflections in the glass and metal. The mouth blown glass is elegantly framed by the metal disc in soft metallic finish.

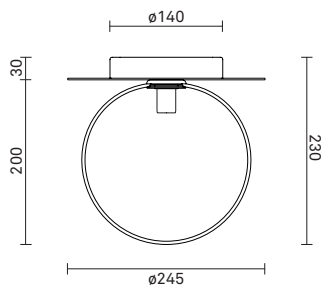
While the version in Optic Clear glass creates sparkling reflections, the version in Opal White glass completes the minimalistic Nordic look.

**Liila 1 Large Wall/Ceiling** works perfectly single or grouped in a decorative formation. Liila 1 also suits smaller rooms, the bathroom and the entrance hall.

### Liila collection:

The Liila collection include the following products:

- Liila 1 Wall/Ceiling / Optic
- Liila 1 Wall/Ceiling / Opal
- Liila 1 Large Wall/Ceiling / Optic
- Liila 1 Large Wall/Ceiling / Opal
- Liila 12 Wall/Ceiling / Optic
- Liila 12 Wall/Ceiling / Opal



# NUURA

## TECHNICAL INFO

**Product no.:** 04490123

**Type:** Wall Light - Indoor

**Colour:**

Glass: Optic Clear

Metal: Nordic Gold

**Materials:**

Powder coated metal

Mouth-blown glass

**Dimensions:**

∅245mm x 230mm

**Product weight:**

Product: 1190 g

**Packaging:**

Dimensions: L: 523mm x W: 303mm x H: 238mm

Weight: 1014 g

Total weight incl. product: 2204 g

Number of parcels: 1

Material: Brown cardboard.

**Packaging - weight - material:**

Cardboard outside: 396 g

Cardboard inside: 582 g

Bubble wrap: 24 g

Plastic bag: 12 g

**Cleaning:**

Use a soft dry cloth to clean the product.

Do not use household cleaners.

**Certifications and labels:**

CE - CE-certified

IP20 - IP20

□ - Class II

**Light source:**

Socket: G9

Max wattage: 7W LED (Bulb not included)

Voltage (V): 220-240V

**Recommended light source:**

Illumination G9 (344-09), 3.6W LED, 2700K, 400lm

**Energy efficiency class:**

A++ (with recommended bulb)

**Dimmability:**

Can be fitted with an aligned dimmer.

**DALI compatible**

**Light calculations:**

