




Design By Ichiro Iwasaki

Floor lamp. Design by Ichiro Iwasaki. This reading lamp is characterized by having two diffusers with adjustable heads. Available in white, black, cream and green matt finishes.

## Model Sheet



Finish		04 Black NCS 9000N
		58 Cream NCS S 2005-Y20R
		23 Warm White test ral

LED temperature color 2700 K

Dimming On/Off

Installation type Plug-in

**Materials** Head: Aluminium  
Base: Zinc Alloy  
Diffuser: PC- Polycarbonate  
Rods: Steel

Light source 2 x LED 4,48W 350mA



LED CRI&gt;90 905.9 lm 100.66 2700 K

Driver Constant Current 350 100~240 V V 50~60 Hz HZ

Remarks Switch on the cable



Bi-volt 50-60Hz

Application Floor and Table Lamps

**Packaging** 1 Box  
0.33 m x 0.265 m x 1.496 m  
Gross weight 8.45  
Net weight 4.8  
Vol. 0.1308

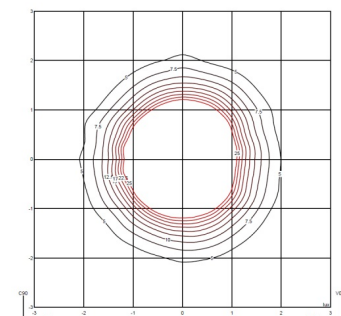
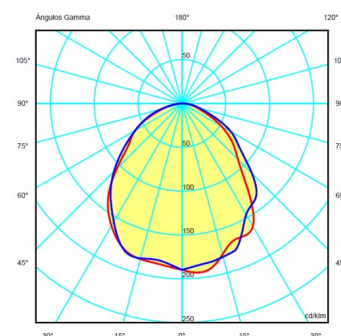
## Lighting effect

## Reading

High intensity, glare-free task lighting

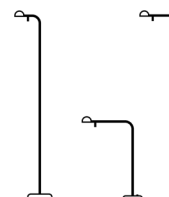


## Photometric Data



Efficiency 31.71 lm/W  
Coordinate System CG  
Total Flux 382.34 lm  
Maximum Value 161.13 cd

## Other Applications

All of our products come with a five-year warranty. Check our legal terms at [www.vibia.com/warranty](http://www.vibia.com/warranty)

Vibia Lighting, S.L.U.

Office / Oficina  
Progrés 4-6. 08850 Gavà. Barcelona, Spain.

International T +34 934 796 971  
Spain / Portugal T +34 934 796 970

customer.service@vibia.com  
vibia.com