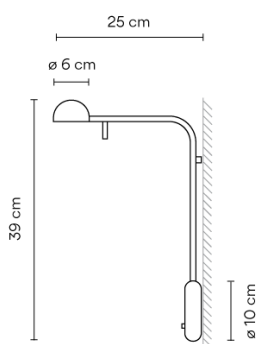


Design By Ichiro Iwasaki

Wall lamp. Design by Ichiro Iwasaki. Wall light for reading, ideal for bedrooms. The diffuser can turn and rotate to bring the light to where it is needed. Available in white, black, cream and green matt finishes.

Model Sheet



Finish 58 Cream
NCS S 2005-Y20R
04 Black
NCS 9000N

LED temperature color 2700 K

Dimming On/Off

Installation type Surface Canopy

Materials Head: Aluminium
Base: Zinc Alloy
Diffuser: PC- Polycarbonate
Rods: Steel

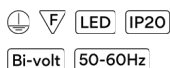
Light source 1 x LED 4,48W 350mA



LED CRI>90 452.95 lm 100.66
2700 K

Driver Constant Current 350 100~240
V V 50~60 Hz HZ

Remarks Switch on the wall plate



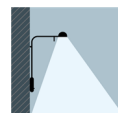
Application Wall Lamps

Packaging 1 Box
0.473 m x 0.355 m x 0.146 m
Gross weight 1.5
Net weight 1
Vol. 0.0245

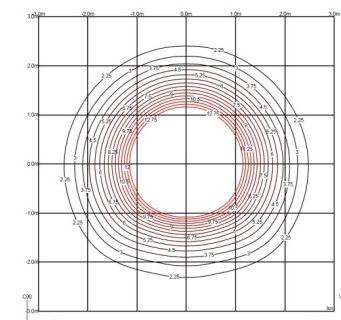
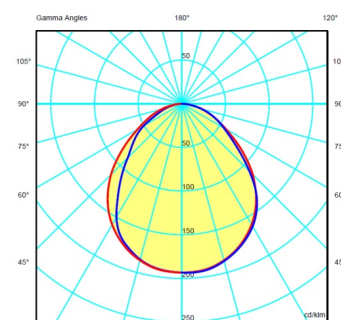
Lighting effect

Reading

High intensity, glare-free task lighting

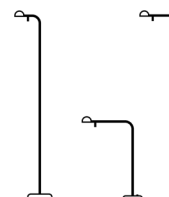


Photometric Data



Efficiency 31.88 lm/W
Coordinate System CG
Total Flux 192.18 lm
Maximum Value 80.54 cd

Other Applications



All of our products come with a five-year warranty. Check our legal terms at www.vibia.com/warranty

Vibia Lighting, S.L.U.

Office / Oficina
Progrés 4-6. 08850 Gavà. Barcelona, Spain.

International T +34 934 796 971
Spain / Portugal T +34 934 796 970

customer.service@vibia.com
vibia.com