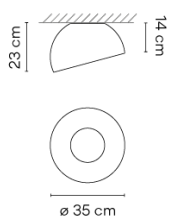
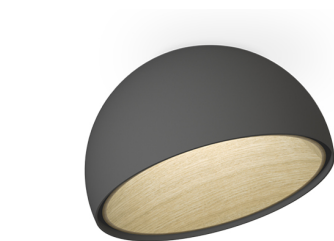


Model Sheet



Finish	18 Graphite ADAPTA RF 9913 WX
	93 White test ral
	58 Off-white RAL 7044
LED temperature color	2700 K / 3500 K / 4000 K
Dimming	CASAMBI / 1-10V PUSH / DALI

Installation type	Surface Canopy
-------------------	----------------

Materials	Shade: Wood
Light source	1 x LED PLATE 12W 350mA G
LED	CRi>90 1100 lm 91.66 2700 K / 3500 K / 4000 K
Driver	Constant Current 350 110~240 V V 50~60 Hz HZ
<div> <div> <div></div> <div></div> </div> <div> <div></div> <div></div> </div> <div>Dimmable</div> <div>LED</div> </div>	
<div> <div>IP20</div> <div>Bi-volt</div> <div>50-60Hz</div> </div>	

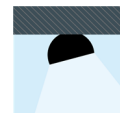
Application	Ceiling Lamps
-------------	---------------

Packaging	1 Box 0.436 m x 0.436 m x 0.348 m Gross weight 6 Net weight 4 Vol. 0.0661
-----------	---

Lighting effect

General Lighting

Lamp for general lighting that equally distributes the light in all directions.



Photometric Data

Other Applications

