

Flamingo mini

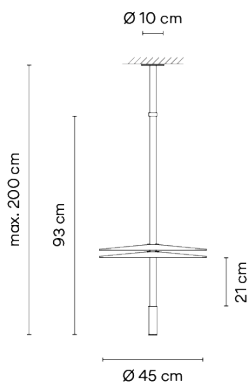
VIBIA

1575

Design By Antoni Arola

The hanging Flaming Mini lamps include two different translucent diffusers together with matching point lights featuring Led terminals to create attenuate and uniform lighting ambiances.

Model Sheet



Optional: Extra cable length
Min. quantity, upcharge and extra lead time
apply [EN]

| | |
|-----------------------|------------------------------|
| Finish | 11 Black NCS S 8500-N |
| LED temperature color | 2700 K |
| Dimming | DALI / Casambi / Push; 1-10V |
| Installation type | Built-in XS / Surface Canopy |

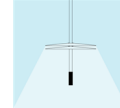
| | |
|--------------|--|
| Materials | Body: Aluminum Shade: PMMA Diffuser: PC- Polycarbonate |
| Light source | 2 x LED 3W 175mA E |
| LED | CRI>90 726 lm 124 2700 K |
| Driver | Constant Current 350 110~240 V V 50~60 Hz HZ <input type="checkbox"/> IP20 <input type="checkbox"/> Bi-volt <input type="checkbox"/> 50-60Hz |

| | |
|-------------|---|
| Application | Hanging lamps |
| Packaging | 2 Box 0.51 m x 0.51 m x 0.165 m Gross weight 5.5 Net weight 4 Vol. 0.0486 |

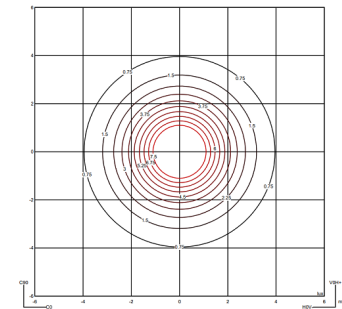
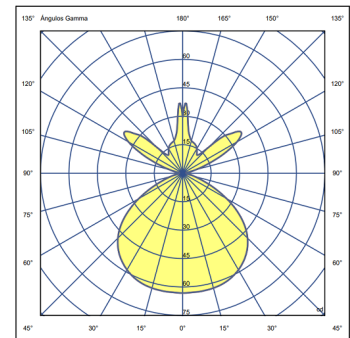
Lighting effect

Volumetric Diffuser

Subtly directed, diffused light that generates a soft hierarchy of light on to the illuminated surface



Photometric Data



All of our products come with a five-year warranty. Check our legal terms at www.vibia.com/warranty

Vibia Lighting, S.L.U.

Office / Oficina
Progrés 4-6. 08850 Gavà. Barcelona, Spain.

International T +34 934 796 971
Spain / Portugal T +34 934 796 970

customer.service@vibia.com
vibia.com