

# Flat

5910

Design By Ichiro Iwasaki

Flat is a ceiling lamp composed of three horizontal discs at various heights that create planes of reflected light. The discs are self-illuminated by reflected light. The Flat ceiling light has a strong graphic quality, combining structure and functionality.

VIBIA

## Model Sheet



### Finish

- 73 White, Grey L1  
NCS S 0300-N, NCS S 1000-N
- 72 White, Green L1  
NCS S 0300-N, NCS S 4005-G80Y
- 10 White  
NCS S 0300-N

### LED temperature color

2700 K / 3500 K

### Dimming

Push; 1-10V; DALI

### Installation type

Surface Canopy

### Materials

Ceiling rose: Steel  
Reflector: Aluminum  
Body: Steel  
Head: Aluminium

### Light source

3 x LED PLATE 13,5W 700mA



### LED

CRI>90 5220 lm 128.88  
2700 K / 3500 K

### Driver

Constant Current 700  
220-240 V V 50-60 Hz HZ



Dimmable LED

IP20 50-60Hz

### Application

Ceiling Lamps

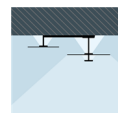
### Packaging

1 Box  
0.727 m x 0.727 m x 0.32 m  
Gross weight 10.6  
Net weight 9.1  
Vol. 0.1691

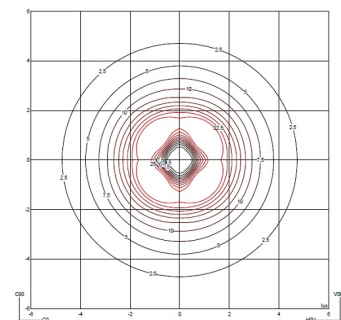
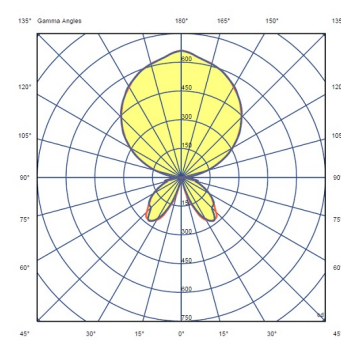
### Lighting effect

#### Reflected

Creation of visual hierarchies within the luminaire itself, emphasising the materiality and texture of the product



### Photometric Data



### Efficiency

66.71 lm/W

### Coordinate System

CG

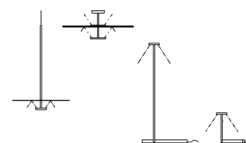
### Total Flux

2875.20 lm

### Maximum Value

661.18 cd

### Other Applications



All of our products come with a five-year warranty. Check our legal terms at [www.vibia.com/warranty](http://www.vibia.com/warranty)

Vibia Lighting, S.L.U.

Office / Oficina  
Progrés 4-6. 08850 Gavà. Barcelona, Spain.

International T +34 934 796 971  
Spain / Portugal T +34 934 796 970

customer.service@vibia.com  
vibia.com