

Flat

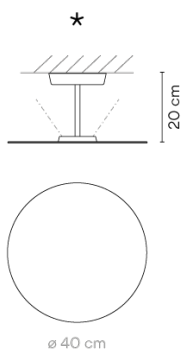
5920

Design By Ichiro Iwasaki

Flat is a ceiling lamp consisting of a horizontal disc that diffuses reflected light. The disc is self-illuminated by reflected light. The Flat ceiling light has a strong graphic quality, combining structure and functionality.

VIBIA

Model Sheet



Finish

- 47 Green L1
NCS S 4005-G80Y
- 10 White
NCS S 0300-N
- 13 Off-White
NCS S 1000-N

LED temperature color 2700 K / 3500 K

Dimming Push; 1-10V / DALI

Installation type Surface Canopy

Materials

Ceiling rose: Steel
Reflector: Aluminum
Body: Steel
Head: Aluminium

Light source 1 x LED PLATE 13,5W 700mA

A+

LED CRI>90 1740 lm 128.88
2700 K / 3500 K

Driver Constant Current 700 110~240
V V 50-60 Hz HZ

Dimmable LED
IP20 Bi-volt 50-60Hz

Application

Ceiling Lamps

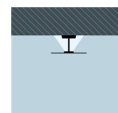
Packaging

1 Box
0.71 m x 0.71 m x 0.13 m
Gross weight 3.1
Net weight 1.91
Vol. 0.0655

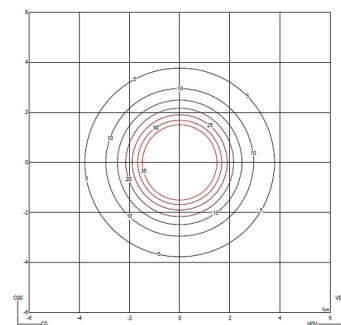
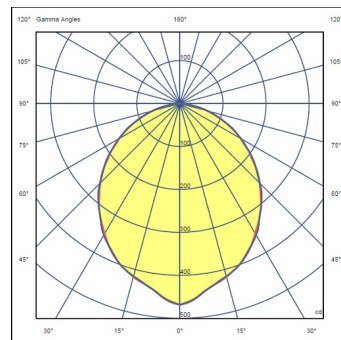
Lighting effect

Surface Grazer

Creation of visual hierarchies through projected light, emphasising the materiality and texture of the surrounding environment

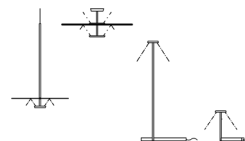


Photometric Data



Efficiency 76.48 lm/W
Coordinate System CG
Total Flux 1126.58 lm
Maximum Value 468.59 cd

Other Applications



All of our products come with a five-year warranty. Check our legal terms at www.vibia.com/warranty

Vibia Lighting, S.L.U.

Office / Oficina
Progrés 4-6. 08850 Gavà. Barcelona, Spain.

International T +34 934 796 971
Spain / Portugal T +34 934 796 970

customer.service@vibia.com
vibia.com