

Flat

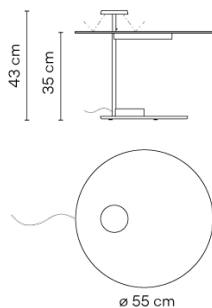
5950

Design By Ichiro Iwasaki

The Flat floor lamp offers multiple functionality; material and light are integrated in a single body. The Flat collection contains various planes of light that rise up to become self-illuminating supports.

VIBIA

Model Sheet



Finish 10 White
NCS S 0300-N

LED temperature color 2700 K / 3500 K

Dimming Push

Installation type Plug-in

Materials Body: Steel
Base: Steel
Head: Aluminium
Reflector: Aluminum

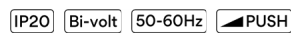
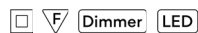
Light source 1 x LED PLATE 7W 400mA



LED CRI>90 1200 lm 171.4
2700 K / 3500 K

Driver Constant Current 400
100~240 V V 50~60 Hz HZ

Remarks 24V transformer at plug



Application Floor and Table Lamps

Packaging 1 Box
0.72 m x 0.72 m x 0.5 m
Gross weight 14.6
Net weight 12.71
Vol. 0.2592

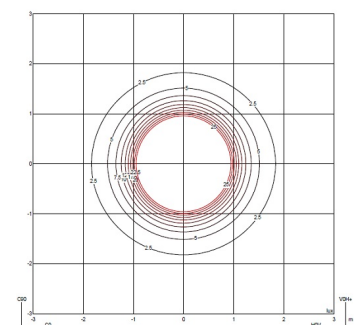
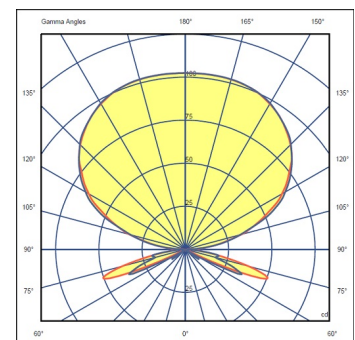
Lighting effect

Reflected

Creation of visual hierarchies within the luminaire itself, emphasising the materiality and texture of the product

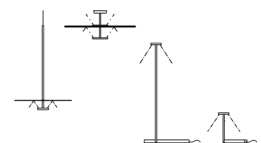


Photometric Data



Efficiency 51.15 lm/W
Coordinate System CG
Total Flux 455.40 lm
Maximum Value 102.48 cd

Other Applications



All of our products come with a five-year warranty. Check our legal terms at www.vibia.com/warranty

Vibia Lighting, S.L.U.

Office / Oficina
Progrés 4-6. 08850 Gavà. Barcelona, Spain.

International T +34 934 796 971
Spain / Portugal T +34 934 796 970

customer.service@vibia.com
vibia.com