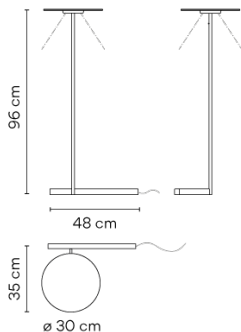


5957

Design By Ichiro Iwasaki

The Flat floor lamp offers multiple functionality; material and light are integrated in a single body. The Flat collection contains various planes of light that rise up to become self-illuminating supports.

Model Sheet



Finish

- 37 Terra Red
NCS S 4040-Y70R
- 47 Green L1
NCS S 4005-G80Y
- 13 Off-White
NCS S 1000-N

LED temperature color 2700 K / 3500 K

Dimming Push

Installation type Plug-in

Materials

Body: Steel
Base: Steel
Head: Aluminium
Reflector: Aluminum

Light source 1 x LED PLATE 7W 400mA



LED CRI>90 1200 lm 171.4
2700 K / 3500 K

Driver Constant Current 400
100-240 V V 50-60 Hz HZ

Remarks 24V transformer at plug

☐ ☒ **F** **Dimmer** **LED**
IP20 **Bi-volt** **50-60Hz** **PUSH**

Application Floor and Table Lamps

Packaging 1 Box
0.37 m x 0.51 m x 1.12 m
Gross weight 6
Net weight 4.46
Vol. 0.2113

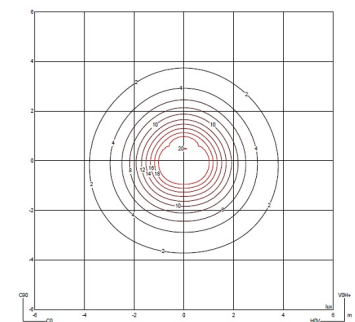
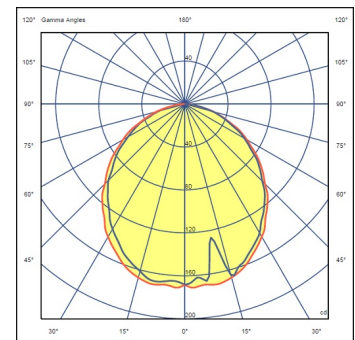
Lighting effect

Reflected

Creation of visual hierarchies within the luminaire itself, emphasising the materiality and texture of the product

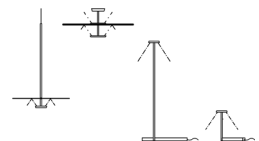


Photometric Data



Efficiency 58.00 lm/W
Coordinate System CG
Total Flux 444.45 lm
Maximum Value 171.27 cd

Other Applications



All of our products come with a five-year warranty. Check our legal terms at www.vibia.com/warranty

Vibia Lighting, S.L.U.

Office / Oficina
Progrés 4-6. 08850 Gavà. Barcelona, Spain.

International T +34 934 796 971
Spain / Portugal T +34 934 796 970

customer.service@vibia.com
vibia.com