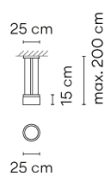
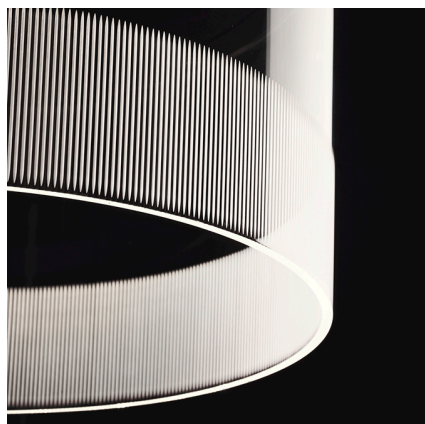


### Model Sheet



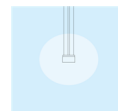
**Optional : Extra cable length**  
Min. quantity, upcharge and extra lead time apply [EN]

<b>Finish</b>	18 Graphite ADAPTA RF 9913 WX
<b>LED temperature color</b>	3000 K
<b>Dimming</b>	Casambi / Push; 1-10V / Optical sensor / DALI-2
<b>Installation type</b>	Surface Canopy
<b>Materials</b>	Ceiling rose: Steel Body: Aluminum
<b>Light source</b>	1 x LED STRIP 24V 12W G
<b>LED</b>	CRI>90 1069 lm 118 3000 K
<b>Driver</b>	Constant Voltage 110~240 V V 50~60 Hz HZ
<b>Remarks</b>	Sensor on the LED base <div> <div></div> <div>F</div> <div>Dimmer</div> <div>LED</div> </div> <div> <div>IP20</div> <div>Bi-volt</div> <div>50-60Hz</div> <div>PUSH</div> </div>
<b>Application</b>	Hanging lamps
<b>Packaging</b>	1 Box 0.385 m x 0.385 m x 0.3 m Gross weight 3.3 Net weight 2.1 Vol. 0.0444

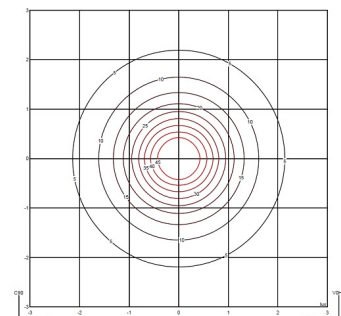
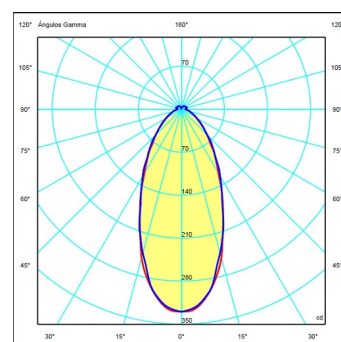
#### Lighting effect

##### Volumetric Diffuser

Subtly directed, diffused light that generates a soft hierarchy of light on to the illuminated surface



#### Photometric Data



<b>Efficiency</b>	26.02 lm/W
<b>Coordinate System</b>	CG
<b>Total Flux</b>	398.74 lm
<b>Maximum Value</b>	329.76 cd

#### Other Applications

