

Ghost

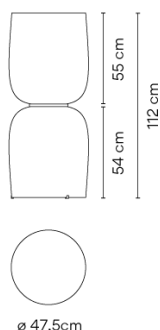
4960


Design By Arik Levy


The Ghost table lamp features a stacked silhouette of bulbous forms that radiate a warm, ambient glow. The diffusers are made of mouthblown opal triplex glass in a choice of several colours for mix-and-match lighting effects.

VIBIA

Model Sheet



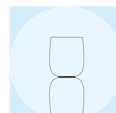
Finish	 11 Black NCS S 8500-N
LED temperature color	2700 K Optional 2700 K Min. quantity, upcharge and extra lead time apply [EN]
Dimming	DALI / Casambi / Push / 1-10V
Installation type	Plug-in

Materials	Ceiling rose: Steel
Light source	2 x LED 19,8W 800mA 
LED	CRI>90 2716 lm 137 2700 K
Driver	Constant Current 800 100~240 V V 50~60 Hz HZ <input type="checkbox"/> Dimmable <input checked="" type="checkbox"/> LED <input type="checkbox"/> IP20 <input type="checkbox"/> Bi-volt <input checked="" type="checkbox"/> 50-60Hz <input checked="" type="checkbox"/> PUSH <input checked="" type="checkbox"/> 0-10V
Application	Floor and Table Lamps
Packaging	2 Box 0.61 m x 0.61 m x 0.79 m Gross weight 25.7 Net weight 22.7 Vol. 0.5878

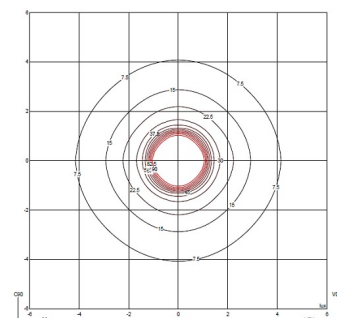
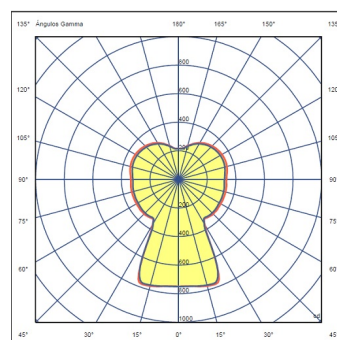
Lighting effect

Volumetric Diffuser

Subtly directed, diffused light that generates a soft hierarchy of light on to the illuminated surface

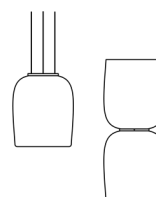


Photometric Data



Efficiency	80.56 lm/W
Coordinate System	CG
Total Flux	4266.67 lm
Maximum Value	776.20 cd

Other Applications



All of our products come with a five-year warranty. Check our legal terms at www.vibia.com/warranty

Vibia Lighting, S.L.U.

Office / Oficina
Progrés 4-6. 08850 Gavà. Barcelona, Spain.

International T +34 934 796 971
Spain / Portugal T +34 934 796 970

customer.service@vibia.com
vibia.com