

Halo lineal

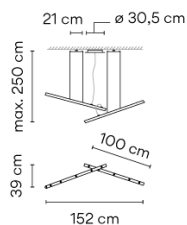
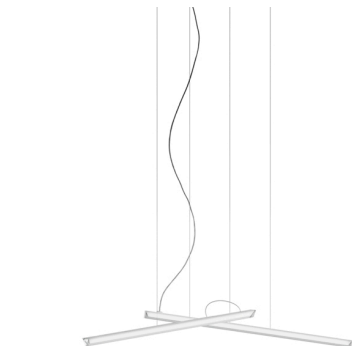
2340

Design By Martín Azúa


HALO is a hanging lamp with two intertwined, straight pieces, which creates subtle, magical lighting. Designed by Martín Azúa. By combining different pieces you can show off hanging lights which float in the air to fit harmoniously into the room. It is available in matt white lacquer.

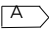
VIBIA

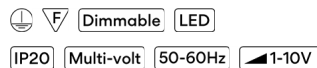
Model Sheet



Optional: Extra cable length
Min. quantity, upcharge and extra lead time apply [EN]

Finish	 O3 White RAL 9016
LED temperature color	2700 K / 3000 K
Dimming	Casambi / 1-10V / DALI
Installation type	Surface Canopy / Remote XXS

Materials	Diffuser: PMMA Ceiling rose: Steel
Light source	2 x LED STRIP 24V 15.3W 
LED	CRI>80 2567 lm 83.88 2700 K / 3000 K
Driver	Constant Voltage 100~277 V V 50~60 Hz HZ
Remarks	1-10V Electronic dimming

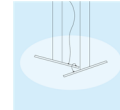


Application	Hanging lamps
Packaging	2 Box 1.265 m x 0.19 m x 0.13 m Gross weight 6.2 Net weight 5.58 Vol. 0.0463

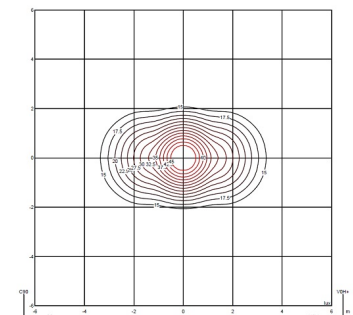
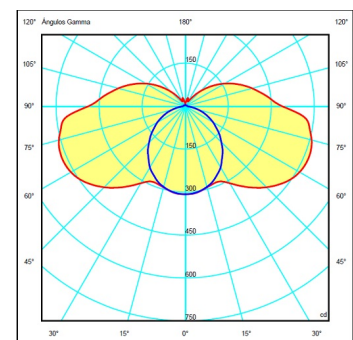
Lighting effect

Volumetric Diffuser

Subtly directed, diffused light that generates a soft hierarchy of light on to the illuminated surface

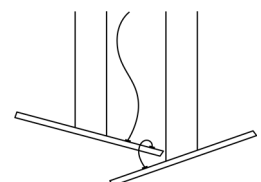


Photometric Data



Efficiency	60.85 lm/W
Coordinate System	CG
Total Flux	2314.68 lm
Maximum Value	466.14 cd

Other Applications



All of our products come with a five-year warranty. Check our legal terms at www.vibia.com/warranty

Vibia Lighting, S.L.U.

Office / Oficina
Progrés 4-6. 08850 Gavà. Barcelona, Spain.

International T +34 934 796 971
Spain / Portugal T +34 934 796 970

customer.service@vibia.com
vibia.com