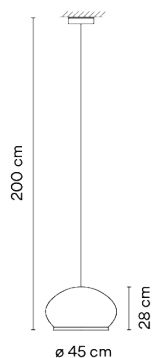
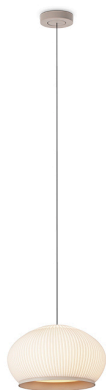


7455

Design By Meike Harde

The Knit hanging lamp is characterised by the light emitted by its fabric shade, creating a soft light effect that generates a warm, cosy atmosphere.

Model Sheet



Optional : Extra cable length
Min. quantity, upcharge and extra lead time
apply [EN]

Finish	24 Beige M1 NCS S 2005-Y50R
LED temperature color	2700 K
Dimming	1-10V / DALI / Casambi
Installation type	Remote Micro / Surface Canopy / Surface Free Wire / Built-in XS

Materials Fabric Shade: PES FR
Diffuser ring and support: ABS
Diffuser: PMMA
Ceiling rose: ABS

Light source 6 x LED 5,9W 1050mA



LED CRI>90 4740 lm 133.9
2700 K

Driver Constant Current 1050
110~240 V V 50~60 Hz HZ



LED IP20

Bi-volt

50-60Hz

1-10V

Application Hanging lamps

Packaging 1 Box
0.54 m x 0.54 m x 0.41 m
Gross weight 5.9
Net weight 3.2
Vol. 0.1195

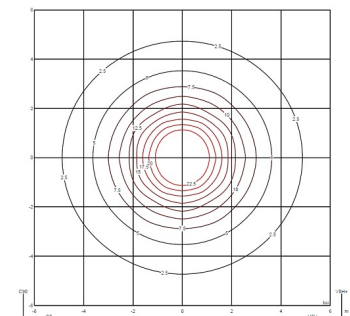
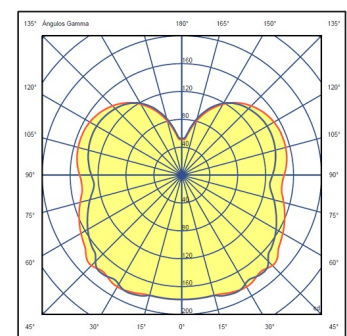
Lighting effect

Volumetric Diffuser

Subtly directed, diffused light that generates a soft hierarchy of light on to the illuminated surface

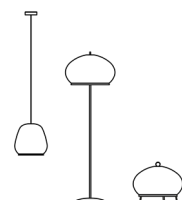


Photometric Data



Efficiency 46.61 lm/W
Coordinate System CG
Total Flux 1842.25 lm
Maximum Value 186.24 cd

Other Applications



All of our products come with a five-year warranty. Check our legal terms at www.vibia.com/warranty

Vibia Lighting, S.L.U.

Office / Oficina
Progrés 4-6. 08850 Gavà. Barcelona, Spain.

International T +34 934 796 971
Spain / Portugal T +34 934 796 970

customer.service@vibia.com
vibia.com