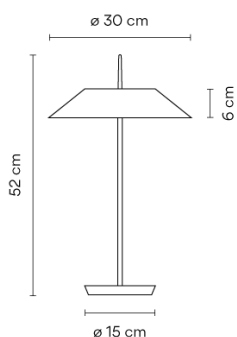
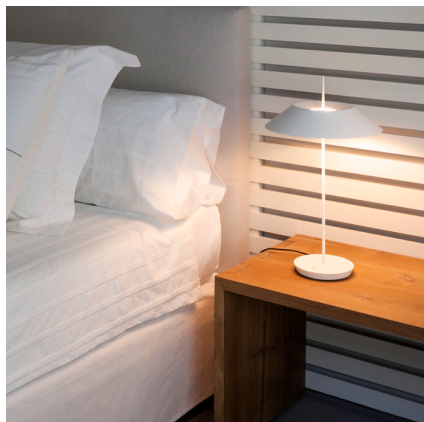







## Model Sheet



### Finish

-  47 Green L1  
NCS S 4005-G80Y
-  23 Warm White  
NCS S 0502-Y50R
-  25 Beige D1  
NCS S 4005-Y50R
-  67 Copper  
Copper
-  18 Graphite  
RAL 7016
-  38 Terra Dark  
NCS S 5040-Y70R

### LED temperature color

2700 K

### Dimming

Optical sensor / PUSH 2

### Installation type

Plug-in

### Materials

Shade: Steel  
Diffuser: PC- Polycarbonate  
Vertical tube: Steel  
Base: Zinc Alloy

### Light source

1 x LED STRIP 24V 12,6W  
1 x LED STRIP 24V 2,4W



### LED

CRI>90 1841 lm 96  
2700 K

### Driver

Constant Voltage 100~240 V V  
50~60 Hz HZ

### Remarks

24V transformer at plug  
Touch sensitive dimmer switch on base



### Application

Floor and Table Lamps

### Packaging

1 Box  
0.615 m x 0.35 m x 0.22 m  
Gross weight 4.9  
Net weight 4.41  
Vol. 0.0473

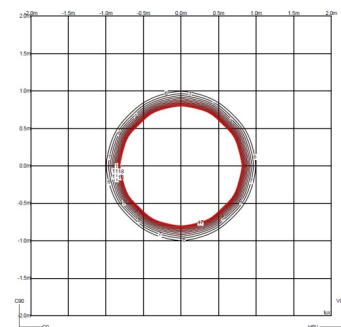
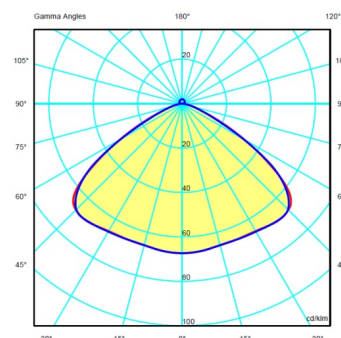
### Lighting effect

#### Close Proximity

Lighting applications for illumination in close proximity to the user



### Photometric Data



### Efficiency

22.66%

### Coordinate System

CG

### Total Flux

1840.50

### Maximum Value

68.63

### Other Applications

