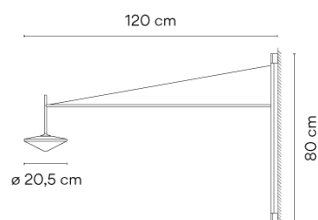
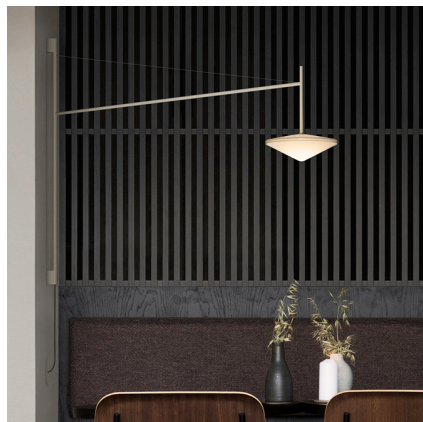





Model Sheet



Finish	 37 Terra Red NCS S 4040-Y70R
	 58 Cream RAL 7044
	 18 Graphite ADAPTA RF 9913 WX

LED temperature color	2700 K
Dimming	DALI-2 / Push; 1-10V / Casambi
Installation type	Built-in

Materials	Body: Steel Diffuser: Blown-glass LED support: Aluminum
------------------	---

Light source	1 x LED 4W 350mA
---------------------	------------------



LED	CRI>90 550 lm 110 2700 K
------------	-----------------------------

Driver	Constant Current 350 220~240 V V 50~60 Hz HZ
---------------	---

Remarks	Built-in version
----------------	------------------



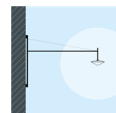
Application	Wall Lamps
--------------------	------------

Packaging	2 Box 0.858 m x 1.18 m x 0.072 m Gross weight 4.5 Net weight 2.4 Vol. 0.0877
------------------	--

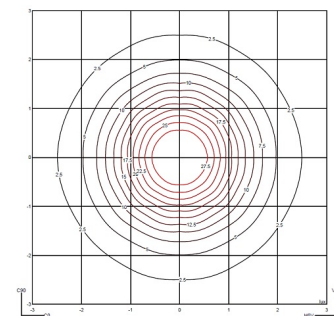
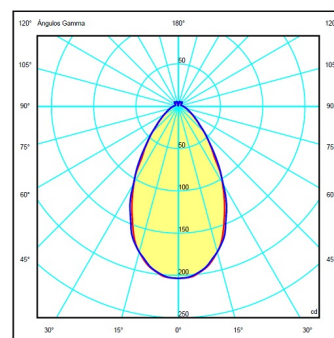
Lighting effect

Volumetric Diffuser

Subtly directed, diffused light that generates a soft hierarchy of light on to the illuminated surface



Photometric Data



Other Applications

