

Wind

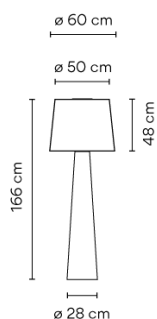
4067

Design By Jordi Vilardell

WIND is a floor lamp with fibreglass shade and an avant-garde look. It is suitable for both interior and exterior. Designed by Jordi Vilardell.

VIBIA

Model Sheet



Finish	27 Sand NCS S 1505-Y50R
	53 Green M1 NCS S 6005-G80Y
	61 Ocre Red NCS S 3050-Y60R

LED temperature color 2700 K

Dimming On/Off

Installation type Surface

Materials Base: FG- Fiberglass

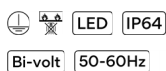
Light source 1 x LED PLATE 25W 700mA
1 x LED 2,4W 700mA



LED CRI>90 3480 lm 139.2
2700 K

Driver Constant Current 700 100~240
V V 50~60 Hz HZ

Remarks Portable version



Application Outdoor lamps

Packaging 3 Box
0.64 m x 0.6 m x 2.11 m
Gross weight 47.2
Net weight 42.48
Vol. 1.1365

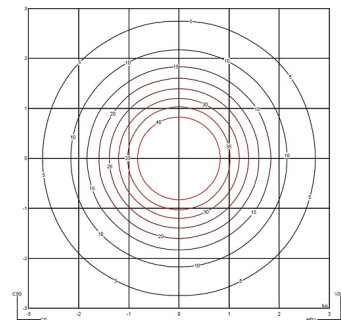
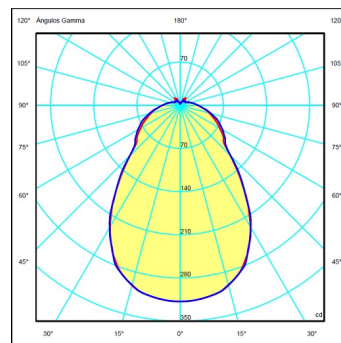
Lighting effect

Volumetric Diffuser

Subtly directed, diffused light that generates a soft hierarchy of light on to the illuminated surface



Photometric Data



Efficiency	30.28 lm/W
Coordinate System	CG
Total Flux	772.57 lm
Maximum Value	318.16 cd

Other Applications



All of our products come with a five-year warranty. Check our legal terms at www.vibia.com/warranty

Vibia Lighting, S.L.U.

Office / Oficina
Progrés 4-6. 08850 Gavà. Barcelona, Spain.

International T +34 934 796 971
Spain / Portugal T +34 934 796 970

customer.service@vibia.com
vibia.com