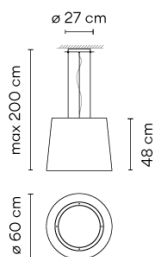


Design By Jordi Vilardell

Hanging lamp for outdoor use. Designed by Jordi Vilardell. The choice of a material, glass fibre, which is produced industrially by means of an innovative use of filament winding technology, gives this collection an appearance which unites technology with tradition.

Model Sheet



Optional: Extra cable length
Min. quantity, upcharge and extra lead time apply [EN]

Finish	61 Ocre Red NCS S 3050-Y60R
	53 Green M1 NCS S 6005-G80Y
	27 Sand NCS S 1505-Y50R

LED temperature color 2700 K

Dimming On/Off

Installation type Surface Canopy

Materials Lid: Steel
Canopy Plate: Steel

Light source 1 x LED PLATE 25W 700mA



LED CRI>90 3480 lm 139.2
2700 K

Driver Constant Current 700 110~240
V V 50~60 Hz HZ



Bi-volt 50-60Hz

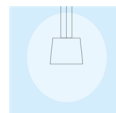
Application Hanging lamps

Packaging 1 Box
0.67 m x 0.67 m x 0.62 m
Gross weight 11
Net weight 9.9
Vol. 0.2783

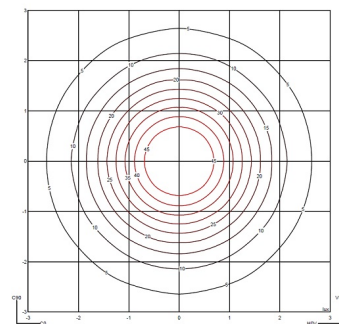
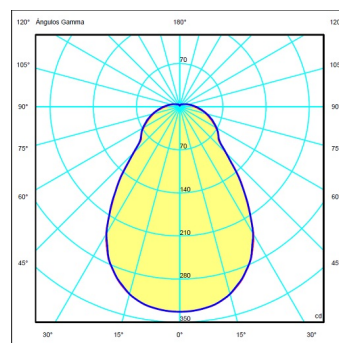
Lighting effect

Volumetric Diffuser

Subtly directed, diffused light that generates a soft hierarchy of light on to the illuminated surface



Photometric Data



Efficiency	35.51 lm/W
Coordinate System	CG
Total Flux	724.33 lm
Maximum Value	333.02 cd

Other Applications

